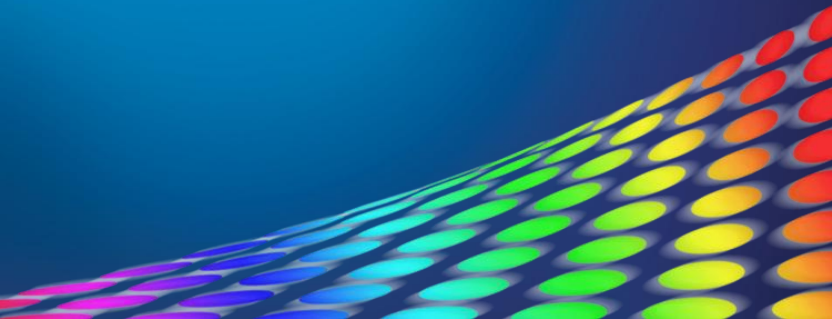




U L I V E S <sup>TM</sup>

v.2.0

Installation guide



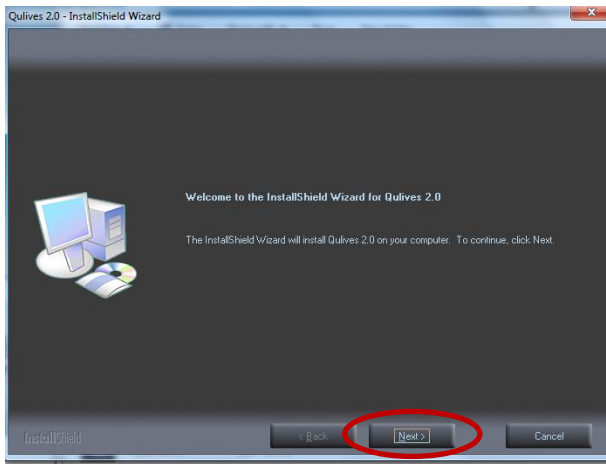
# Introduction

- This guide is meant to instruct users on the proper method for installing QuLives™ v.2.0. It is a step-by-step instruction guide with images detailing the individual steps.
- Before installing QuLives™ v.2.0., make sure you uninstall the previous version of QuLives™, restart the computer and install the QuLives v.2.0. (if you purchase FVexpress™ card, make sure you plug in the card during uninstallation/installation at all time)



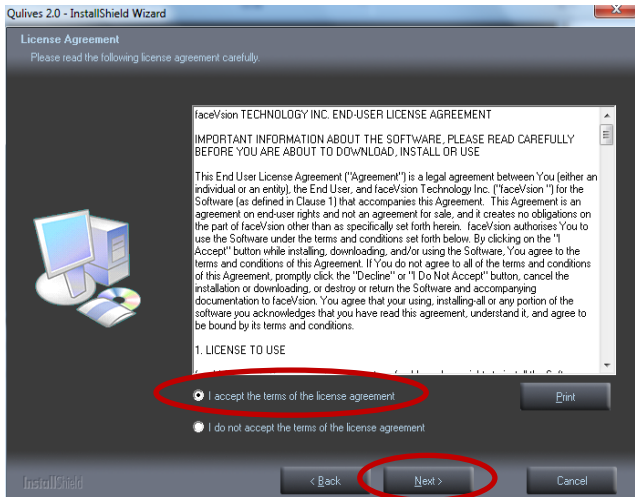
# Install QuLives™ 2.0

- Select "Setup"
- Click **Next** to install QuLives™ on your PC



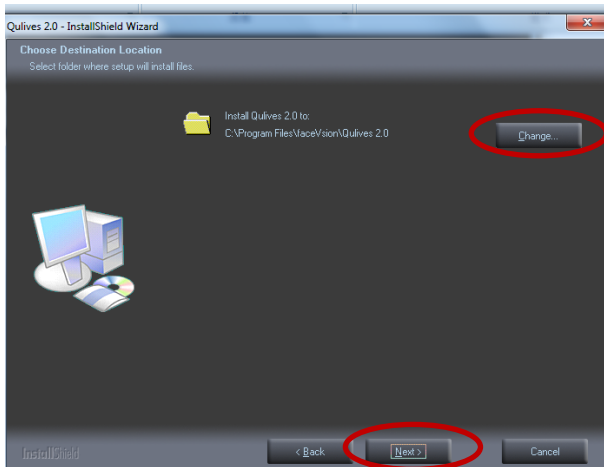
# Install QuLives™ 2.0

- Accept the agreement, then click **Next**



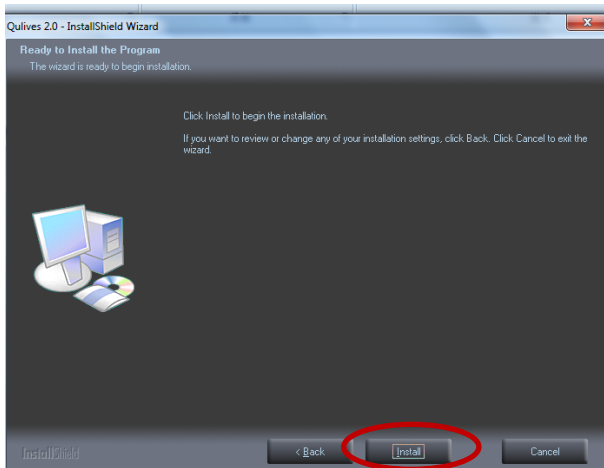
# Install QuLives™ 2.0

- Click **Next** to continue the installation
- Or click **Change** to save the file in designated location and then click **Next**



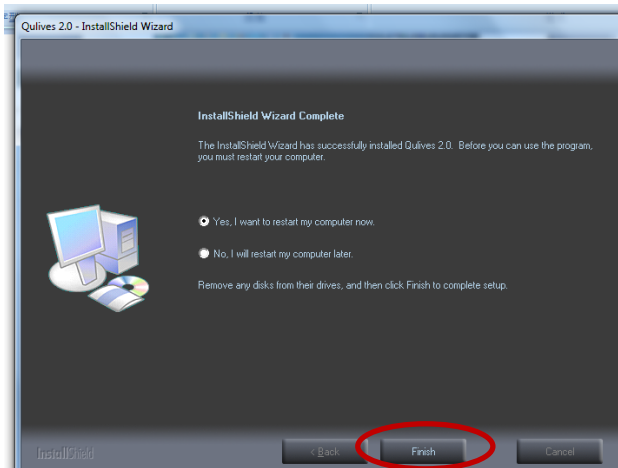
# Install QuLives™ 2.0

- Click **Install** to start the installation



# Install QuLives™ 2.0

- Select restart computer now or later (Must restart your computer before using the program)
- Click **Finish** to complete the installation





© 2009 faceVSION™ Technology Inc. All rights reserved. faceVSION, the faceVSION logo, FVexpress™, and QuLives™ are trademarks of faceVSION Technology Inc., registered in Taiwan and other countries.